

INSTRUCTIONS


PALM BEVELING TOOL

Model JMB-1250

**MOTOR
GUARD**



MAGNA PRODUCTS

 **WARNING:** Read and understand all instructions before attempting to operate tool. Failure to follow instructions may result in property damage and/or serious personal injury.

IMPORTANT SAFETY INSTRUCTIONS



To reduce the risk of serious injury and/or property damage, observe all warnings and instructions while operating the tool. Keep work area clean and well lit. Maintain tool in top condition and obtain service from manufacturer if tool malfunctions. Use only accessories and replacement parts that are provided by the manufacturer.



Always wear proper personal protection when operating this tool. A full face shield per ANSI Z87.1-2003 standard is required at all times to protect face and eyes against injury from flying parts. Adequate gloves and clothing are required to reduce the risk injury from sparks or sharp edges.



SAVE THESE INSTRUCTIONS

Record the following information for warranty and repair purposes:

Model No.: _____ Serial No.: _____

Date Purchased: _____ Purchased From: _____

**IF YOU HAVE ANY QUESTIONS ABOUT THE OPERATION OF PRODUCT CALL TOLL FREE
800-227-2822**

8:00 am to 5:00 pm - Pacific Time - Monday through Friday

MOTOR GUARD CORPORATION
580 CARNEGIE STREET
MANTECA, CALIFORNIA, 93557-6141 USA
www.motorguardplasma.com

PREPARING THE TOOL FOR USE

Unpack tool and inspect for damage and to see that all parts operate freely.

Before connecting desired air connection fitting to tool apply PTFE tape or another suitable thread-sealing compound to the male threads (Fig. 1). Install air coupling and tighten with a wrench.

Hold tool with air inlet facing up and add a few drops of air tool oil (SAE 10) to provide proper tool lubrication on first use (Fig 2).

Connect tool to a supply of clean/dry air. In applications where an airline lubricator is not used, a few drops of air tool oil should be applied weekly per the above procedure.

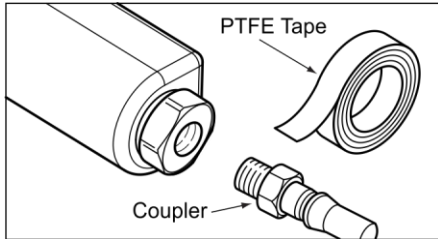


Fig. 1

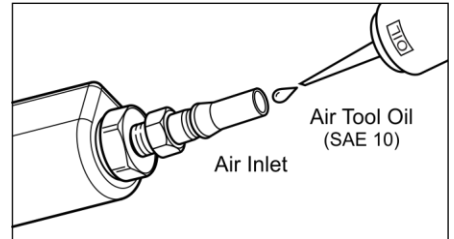


Fig. 2

ADJUSTING DEPTH OF CUT

⚠ IMPORTANT: Disconnect tool from air supply and relieve internal pressure before adjusting cutter depth. Failure to follow these directions can result in serious personal injury.

Refer to Figure 3 below. Tool ships with cutting depth preset at approximately 0.5mm. To adjust depth of cut, disconnect tool from air supply and unlock Flange by turning Flange Screw counter-clockwise until Flange rotates freely.

Looking at tool from top, rotate Flange until arrow on Housing aligns with desired depth. Rotating Flange clockwise will decrease cutting depth while rotating Flange counter-clockwise will increase cutting depth. Depth is adjustable from 0.1mm to 1.5mm.

Once desired cutting depth is set, lock Flange by turning Flange Screw clockwise until flange cannot rotate.

Reconnect air hose and perform a test cut, readjusting depth as needed.

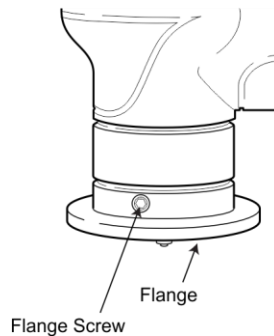
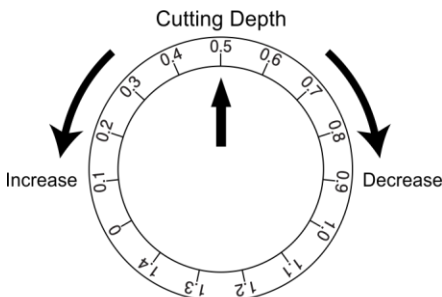


Fig. 3

OPERATING THE TOOL

Place Flange flush with flat work surface and operate tool by rotating safety lever forward to free paddle (Fig. 4) Press and hold paddle down to operate tool. **⚠ Cutting blades must be clear of work surface before beginning tool rotation.** Bring rotating tool into contact with work surface and move tool smoothly in direction shown (Fig. 5).

Best results are obtained by operating the tool in the direction shown and travelling at a smooth, steady pace. Operating in the reverse direction may cause tool to “climb” the work while excessive travel speed may cause chatter and a poor surface finish.



Fig. 4

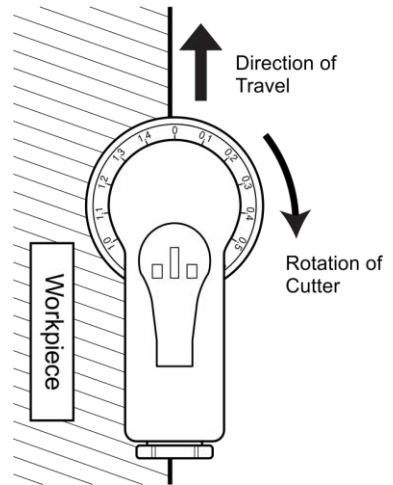


Fig. 5

CUTTER INDEXING AND REPLACEMENT

⚠ IMPORTANT: Disconnect tool from air supply and relieve internal pressure before performing any disassembly or adjustment. Failure to follow these directions can result in serious personal injury.

Three-sided cutters can be indexed to provide a newly sharp edge. Loosen Flange Screw and remove Flange by turning counter-clockwise. Rotate Cutter Holder so that Cutter Bolt can be accessed through Notch in Housing (Fig. 6). Using Torx® Wrench, loosen Cutter Bolt by turning counter-clockwise (Fig. 7). Rotate cutter holder to access remaining cutters.

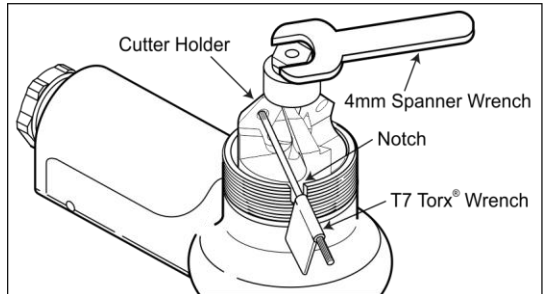


Fig. 6

Follow same procedure in reverse to install new cutters. To loosen Guide Roller Nut, insert Torx® Wrench in Notch to prevent rotation (Fig. 6).

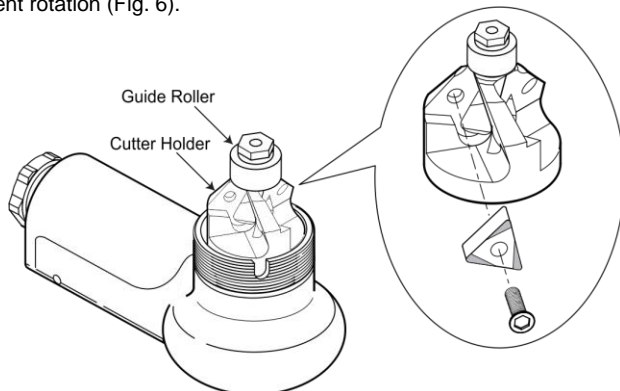
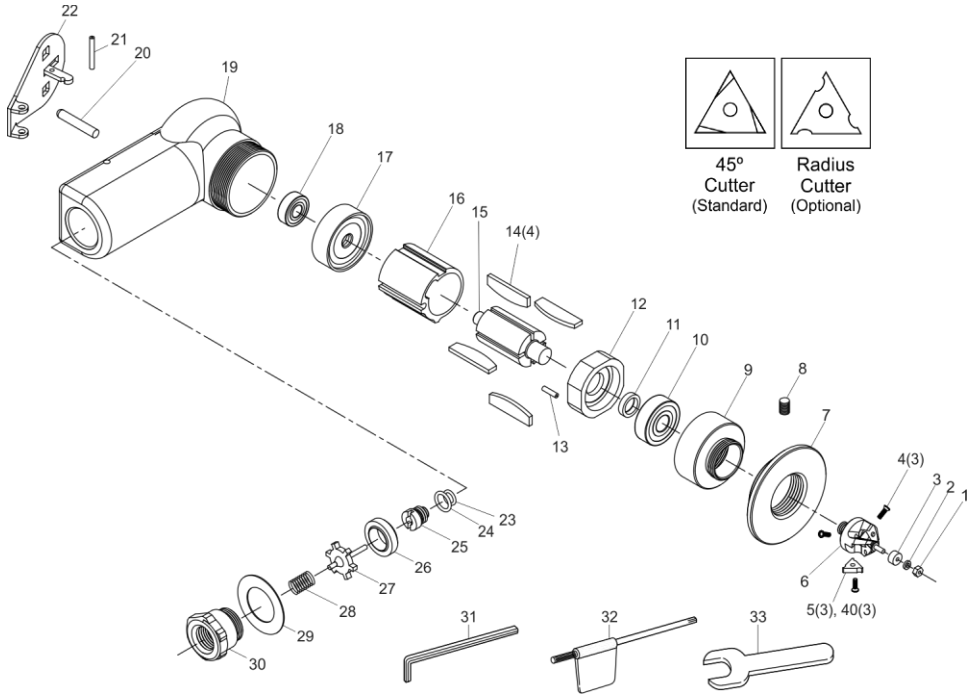


Fig. 7

EXPLODED VIEW AND REPLACEMENT PARTS



PARTS LIST

Index	Part No.	Description	Qty/Tool
1	JMB001	Hex Nut	1
2	JMB002	Spring Washer	1
3	JMB003	Ball Bearing	1
4	JMB004	Cutter Bolt (Pk/3)	3
5	JMB005	Cutter, 45° (Pk/3)	3
6		Cutter Holder	1
7		Flange	1
8		Screw	1
9		Lock Ring	1
10		Ball Bearing	1
11		Collar	1
12		Front Plate	1
13		Roll Pin	1
14		Rotor Blade	4
15		Rotor	1
16		Cylinder	1
17		Rear Plate	1

Index	Part No.	Description	Qty/Tool
18		Ball Bearing	1
19		Body	1
20		Shaft	1
21		Roll Pin	1
22		Safety Lever	1
23		O-Ring	1
24		O-Ring	1
25		Inner Bolt	1
26		Valve Seat	1
27		Valve	1
28		Valve Spring	1
29		Rear Gasket	1
30		Inlet Bushing	1
31	JMB031	Hex Wrench	1
32	JMB032	Torx Wrench	1
33	JMB033	Spanner Wrench	1
40	JMB040	Cutter, Radius (Pk/3)	3

Items with Part Number listed are available through your tool distributor, for all other repair parts, contact manufacturer.

LIMITED WARRANTY

Motor Guard Corporation assumes the responsibility of providing products that are free from defects in workmanship and material. Should a product fail due to a defect in workmanship or material, Motor Guard Corporation will repair or, at its option, replace the product without charge, other than the transportation charges, provided that the product is returned to the factory, transportation prepaid, within **One (1) Year** of the date of purchase. Please contact Motor Guard Corporation for return authorization and shipping instructions.

This limited warranty does not cover normal wear and tear or damage to the product due to neglect, misuse or accident, nor does it cover any loss, damage or expense, either direct, indirect or consequential, arising from the non-function of this product.