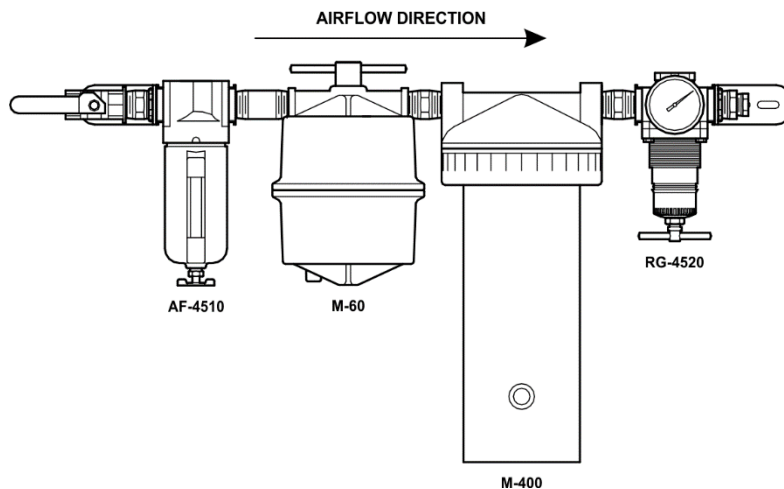


MOTOR GUARD CORPORATION

MODEL M-1000 SYSTEM SUPREME DESICCANT DRYER SYSTEM

INSTALLATION

The M-1000 System Supreme combines a high efficiency particulate and water removal filter, a submicronic filter, a desiccant dryer unit and a high-flow, balanced valve regulator into a highly effective point-of-use system for delivering clean, ultra-dry, oil free air for your critical applications.



FEATURES

- Water trap with visible float type liquid level indicator
- Submicronic Particulate Filter
- Visible desiccant indicator turns from blue to pink when desiccant needs to be changed
- Easy service and element replacement
- High capacity bowls
- Full adjustment over pressure range

SPECIFICATIONS

Maximum Airflow:	30 CFM
Operating Temperature Range:	40 - 120 F
Maximum Inlet Pressure:	125 PSI
Outlet Pressure Range:	0-125 PSI

Before installing unit, relieve upstream pressure completely. Install unit in main air supply line with at least 20 feet of supply line between unit and compressor. Failure to maintain this distance will cause excessive water vapor to pass through unit. Unit is designed for installation in a 1/2" line; use appropriate fittings for installation in other line sizes. Apply pipe thread compound to male thread connections. Before installing unit, relieve upstream pressure completely. Install unit level and in direction of airflow as noted. Mounting brackets are designed for 1/4" hardware. Unit should be mounted to a rigid structure and should not be supported by the supply line.

WARNING: This product is intended for use in industrial compressed air systems only. Do not install where pressures or temperatures can exceed those listed above.

Remove bowl from M-400 Dryer by turning ring counter-clockwise and fill with 2 quarts of desiccant beads. Take care when replacing bowl that O-ring remains in place in head of unit. Petroleum jelly may be used to hold O-ring in place.

Before pressurizing, be sure bowls are turned fully clockwise. Pressurize slowly to avoid high-pressure surge.

OPERATION

Open service valve (2) fully so that handle is parallel to inlet pipe. Turn T-handle on regulator clockwise to increase air pressure, counter-clockwise to decrease. To reduce pressure setting, first reduce pressure to a setting lower than desired, then increase to the desired setting.

Inspect daily for leaks.

Check level of accumulated liquid daily.

Check desiccant indicator daily and replace desiccant when indicator is pale pink in color.

Regulator should be disassembled, cleaned and serviced periodically.

580 CARNEGIE STREET
MANTECA, CA 95337

1-800-227-2822
FAX 209-239-5114

www.motorguard.com

MAINTENANCE

WARNING: Shut off air supply and drain residual pressure before attempting to service any part of the system!

AF-4510 Particulate Filter

To clean or replace filter element, depressurize system, unscrew bowl by turning CCW and remove baffle and element. Wash element in kerosene or other suitable solvent and dry before replacing. Replace element if it cannot be properly cleared. Wash sludge and sediment from bowl with warm, soapy water. Inspect O-ring and replace if damaged or distorted. Reassemble bowl, taking care not to damage threads.

M-60 Submicronic Filter

Element should be replaced when it becomes saturated with water. Remove filter bottom housing by turning t-handle CCW. Grasp element by hand and remove. Install new element. Wash sludge and sediment from housing with warm, soapy water. Inspect seal and replace if damaged or distorted. Reassemble housing, taking care not to damage threads. T-handle should only be hand tightened, do not use external leverage.

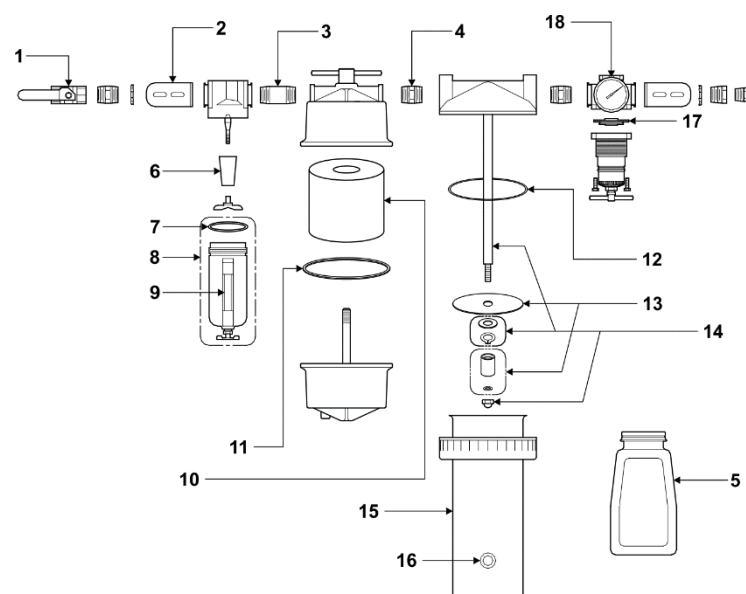
M-400 Desiccant Dryer

When desiccant visible in sight dome is pale pink in color, replace desiccant by turning bowl ring CCW. Remove used desiccant material and replace with 2 quarts of dry (blue) desiccant. Check and clean exhaust tube by removing acorn nut, gasket and filter. Clean or replace filter as needed. When replacing filter, also replace upper (white) dispersion filter by removing retaining ring and sliding off tube. When reinstalling element, note proper location of gasket. Wash sludge and sediment from bowl with warm, soapy water. Inspect O-ring and replace if damaged or distorted. Reassemble bowl, taking care not to damage threads. Take care when replacing bowl that O-ring remains in place in head of unit. Petroleum jelly may be used to hold O-ring in place. Remove spent desiccant from sight dome by turning ring CCW. Replace with dry desiccant beads and reinstall dome.

RG-4520 Precision Air Regulator

On detection of air leaks, pressure fluctuation or pressure creep, depressurize system and remove bottom cap. Inspect valve seat for damage or wear. Inspect seat in head casting for foreign material or damage. Clean with kerosene and blow out with air. Replace any damaged parts. If leak persists, remove bonnet and inspect diaphragm and seat for wear or foreign materials.

To replace diaphragm, remove four screws holding bonnet. Remove diaphragm and spring. Clean diaphragm seat and replace diaphragm and spring. Replace bonnet and reinstall screws. Tighten gradually and firmly.

**Replacement Parts**

Key	Part No.	Ord. No.	Description	Qty.
1	AS2687	42687	Shut-Off Valve 1/2"NPT	1
2	AS2001	12001	Mounting Bracket	2
3	AS4031	74031	Nipple 1/2"NPT x 2"	1
4	AS4021	74021	Nipple 1/2"NPT x CL	3
5	M-4095-Q	04094	Desiccant Quart	2
6	EL4026	74026	Element, Particulate	1
7	RK4047	74047	O-Ring, Bowl	1
8	EL4003	74003	Bowl Kit with O-Ring	1
9	RK4204	74204	Sight Tube Kit	1
10	M-723	00375	Replacement Element	1
11	106-10	21060	Seal	1
12	RK4046	74046	O-Ring	1
13	EL4016	74016	Replacement Element Kit	1
14	RK4037	74037	Repair Kit	1
15	EL4005	74005	Bowl Kit with O-Ring	1
16	RK4014	74014	Sight Dome Kit	1
17	RK4033	74033	Diaphragm, Relieving	1
18	RG4045	74045	Gauge, 0-160 PSI	

LIMITED WARRANTY

Motor Guard Corporation assumes the responsibility of providing equipment that is free from defects in workmanship and material. Should this product fail due to a defect in workmanship or material, Motor Guard Corporation will repair or, at its option, replace the product without charge, other than the transportation charges, provided that the product is returned to the factory, transportation prepaid, within one year of the date of purchase. Please contact Motor Guard Corporation for return authorization and shipping instructions.

This limited warranty does not cover damage to the product due to neglect, misuse or accident, nor does it cover any loss, damage or expense, either direct, indirect or consequential, arising from the non-function of this product. This limited warranty notice replaces any other warranty information, implied or otherwise, enclosed with this product or appearing in literature referring to this product.