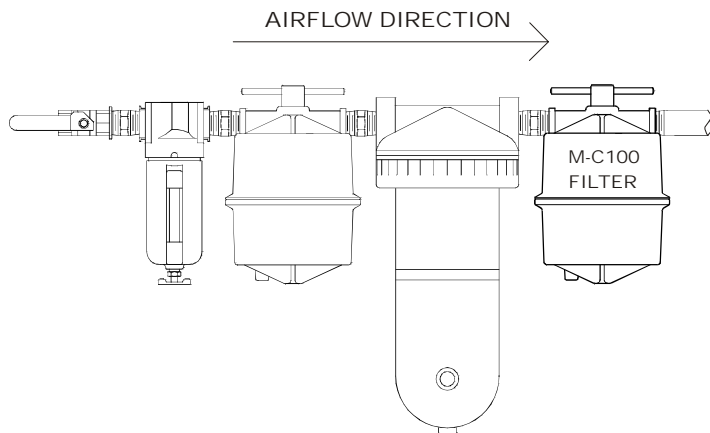


# MOTOR GUARD CORPORATION

## MODEL M-C100 ACTIVATED CARBON COMPRESSED AIR FILTER

### INSTALLATION

The M-C100 Activated Carbon Filter removes oil vapor and other contaminants from compressed air through the adsorption process. In this process, microscopic pores in the activated carbon media trap individual oil and organic molecules while clean air passes through.



#### FEATURES

- Final stage filter removes oil vapor and organic vapors from compressed air
- Installs easily in existing filtration system
- Carbon-Max cartridge contains expanded volume of activated carbon
- Quick and easy cartridge replacement
- Cartridge protects air for one month under normal conditions

#### SPECIFICATIONS

Maximum Airflow:	120 CFM
Operating Temperature Range:	32 - 175 F
Maximum Inlet Pressure:	125 PSI
Nominal Oil Vapor Removal Rating:	<.01 ppm by Weight

Install unit in air supply line downstream of all water traps, particulate filters, coalescing filters and desiccant dryers. This unit is designed to remove vapor from clean, dry air. Appropriate devices to remove water, particulate and oil aerosols must be in place upstream for the proper operation of this unit. Failure to follow these instructions will shorten element life and allow contaminants to pass through filter. Unit is designed for installation in a 1/2" line; use appropriate fittings for installation in other line sizes. Apply pipe thread compound provided to male thread connections. Before installing unit, relieve and lock out upstream pressure completely. Install unit level and in direction of airflow as noted. Piping on inlet and outlet of unit should be properly supported to ensure safe mounting of unit.

**WARNING: This product is intended for use in industrial compressed air systems only. Do not install where pressures or temperatures can exceed those listed above. This product is neither designed nor approved for breathing air applications.**

Before pressurizing, be sure T-handle is tightened for a full seal. Pressurize slowly to avoid high-pressure surge.

After installation, check for leaks.

### OPERATION

Do not exceed rated temperature or pressure during operation. Observe unit for signs of leakage or other defects and service as needed.

## MAINTENANCE

**WARNING: Disconnect Unit, Drain Residual Pressure from System and Lockout Pressure Before Servicing Unit. Use Only Motor Guard Replacement Parts.**

### Daily Maintenance:

Inspect unit daily for leaks. Check that T-handle is tight and replace seal if damaged or distorted.

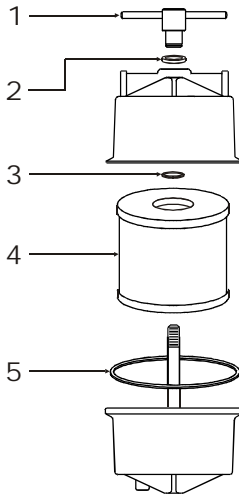
### Filter Cartridge Replacement:

Cartridge should be replaced monthly under normal use and conditions.

Remove filter bottom housing by turning T-handle counter-clockwise. Grasp cartridge by hand and remove. Wipe inside of both housings with a clean cloth. Inspect seal and replace if damaged or distorted. Be sure seal is seated properly in groove.

Install new cartridge into top housing by pressing large hole over flange in housing. Twist slightly for a proper fit. Re-install bottom housing by inserting threaded stud into small hole in bottom of cartridge. Push upwards until stud engages T-handle. Turn T-handle clockwise, taking care not to damage threads. T-handle should only be hand tightened only, do not use external leverage.

Before pressurizing, be sure handle is tightened for a full seal. Pressurize slowly to avoid high-pressure surge. After pressurizing, check for leaks.



### Replacement Parts

Key	Part No	Description	Qty.
1	101-45	T-Handle Assembly	1
2	102-10	Thrust Washer	1
3	110-20	Retaining Ring	1
4	M-785C	Carbon-Max Cartridge, Pk/2	1
5	106-10	Seal	1

## LIMITED WARRANTY

Motor Guard Corporation assumes the responsibility of providing equipment that is free from defects in workmanship and material. Should this product fail due to a defect in workmanship or material, Motor Guard Corporation will repair or, at its option, replace the product without charge, other than the transportation charges, provided that the product is returned to the factory, transportation prepaid, within one year of the date of purchase. Please contact Motor Guard Corporation for return authorization and shipping instructions.

This limited warranty does not cover damage to the product due to neglect, misuse or accident, nor does it cover any loss, damage or expense, either direct, indirect or consequential, arising from the non-function of this product. This limited warranty notice replaces any other warranty information, implied or otherwise, enclosed with this product or appearing in literature referring to this product.